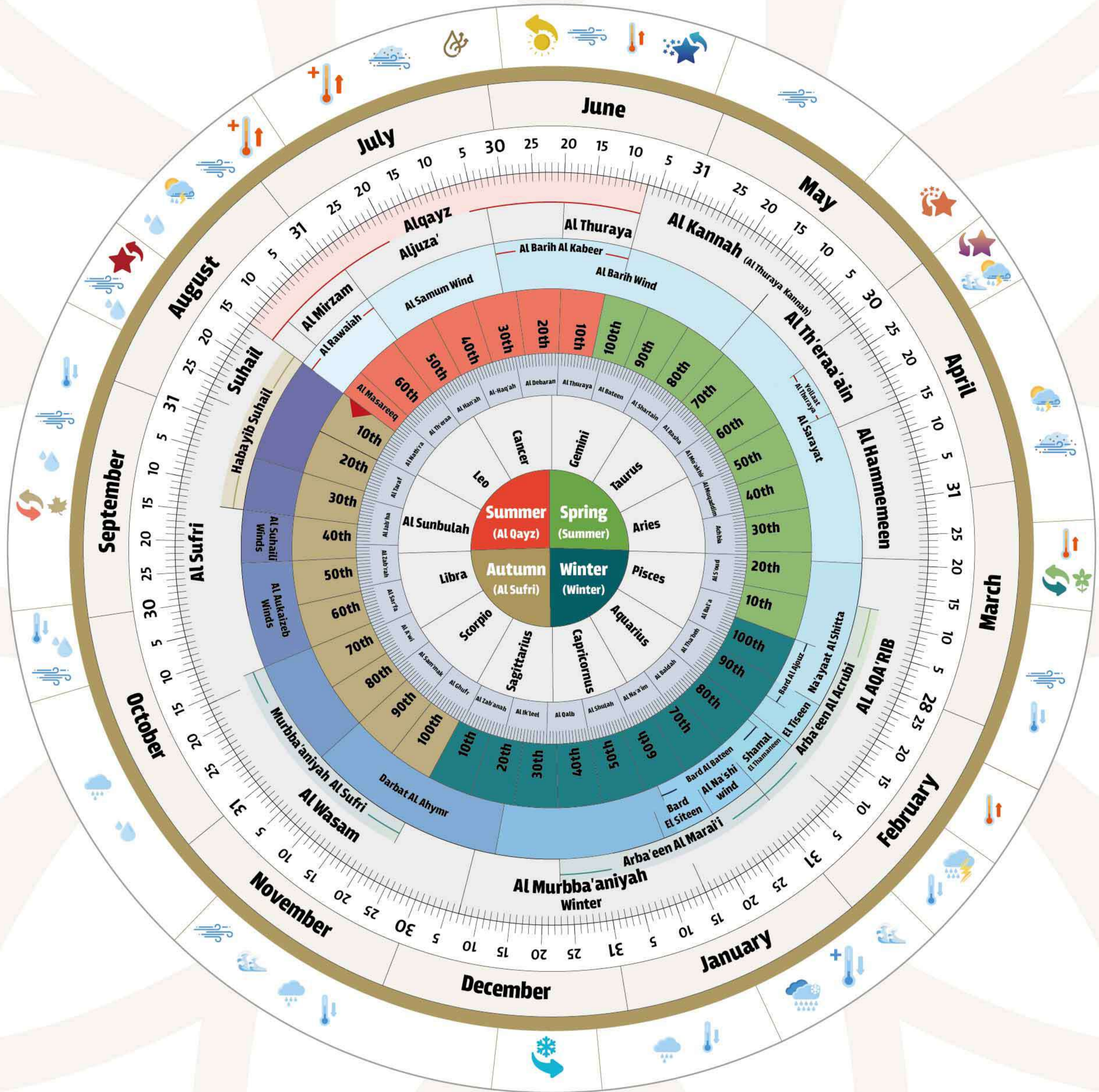


Deirat Al-Droor

Sheikh Zayed Grand Mosque Centre



Heavy Rain With Thunder	Light to moderate rain	Active to strong winds	Rising Temperatures	Low Temperatures
Turbulent Sea And Huge Waves	Turbulence	Sand and Dust Storms	Peak Of Cold And Rainy Season	High Humidity
Disappearance of Thuraya	Appearance Of Thuraya	Disappearance of Suhail	Appearance of Suhail	dry climate
Summer Solstice	Spring Equinox	Winter Solstice	Autumn Equinox	